



IPwe

# THE WORLD'S FIRST GLOBAL PATENT MARKET

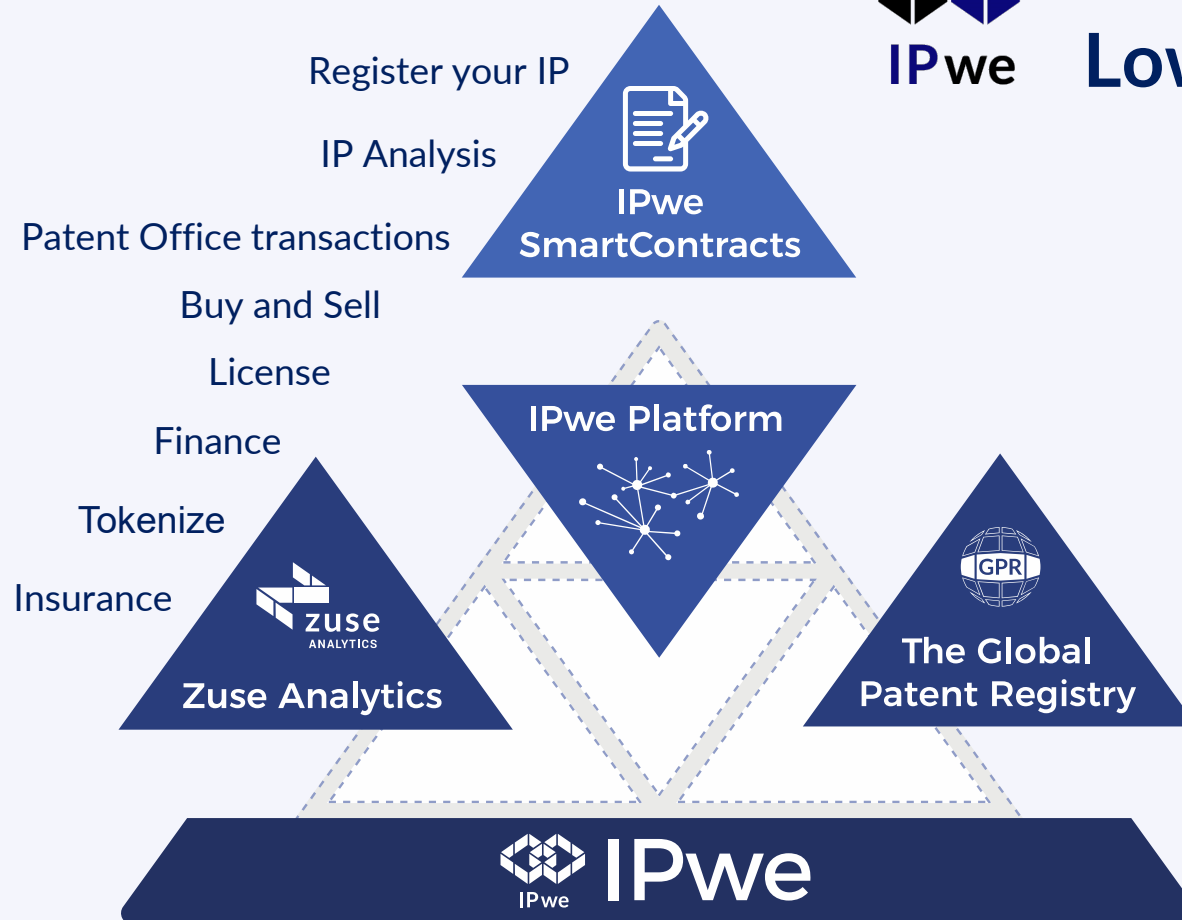
CONFIDENTIAL

[sophie@ipwe.com](mailto:sophie@ipwe.com)



How we do it

# Using Technology to Dramatically Lower Your Cost of Patent Ownership








- ✓ **Smart Contracts**  
Smart contracts ensure the integrity, execution and automation of critical contract provisions
- ✓ **IPwe Platform**  
The world's first global patent platform
- ✓ **Zuse Analytics**  
Leverage the power of artificial intelligence to get answers
- ✓ **Global Patent Registry**  
The world's first patent registry



Save time and money

# IPwe is a Better Way to Transact

Today		 IPwe
30% of selling price	<b>Patent sale</b> 	10% of selling price
30% of licensing price	<b>Patent licenses</b> 	10% of licensing price
Up to \$300 per patent	<b>Patent maintenance fee</b> 	\$30 per patent
Loan to own / 3x+	<b>Patent-based financing</b> 	10% of financing

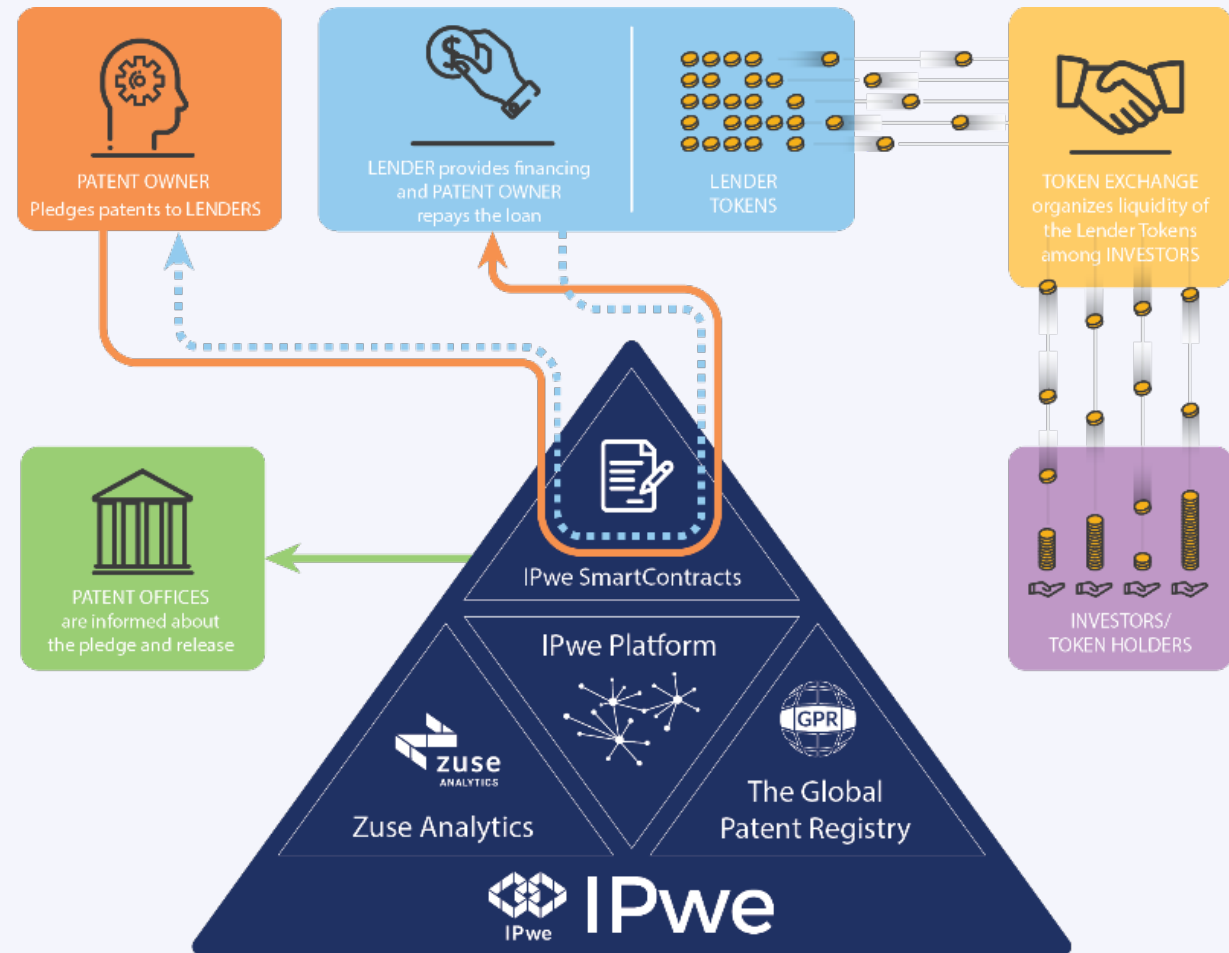
What IPwe offers today

# IPwe Solutions

- ➔ Patent office annuity fees
- ➔ Patent title confirmation
- ➔ Patent license
- ➔ Patent sale
- ➔ Patent-based financing
- ➔ Patent pooling

*Simpler, far less expensive, faster...*

*...powered by blockchain and AI*



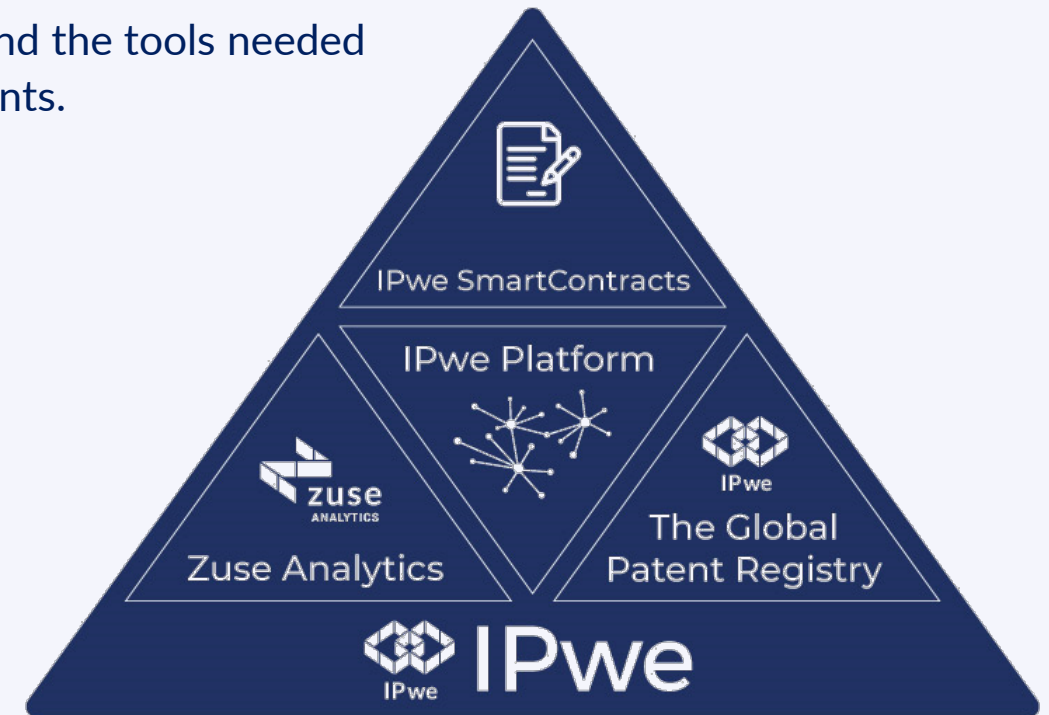
The future

# Together We Can Revolutionize the Patent Ecosystem

**IPwe is the first** platform to **combine** the information and the tools needed to identify, research, understand, transact with, and protect patents.

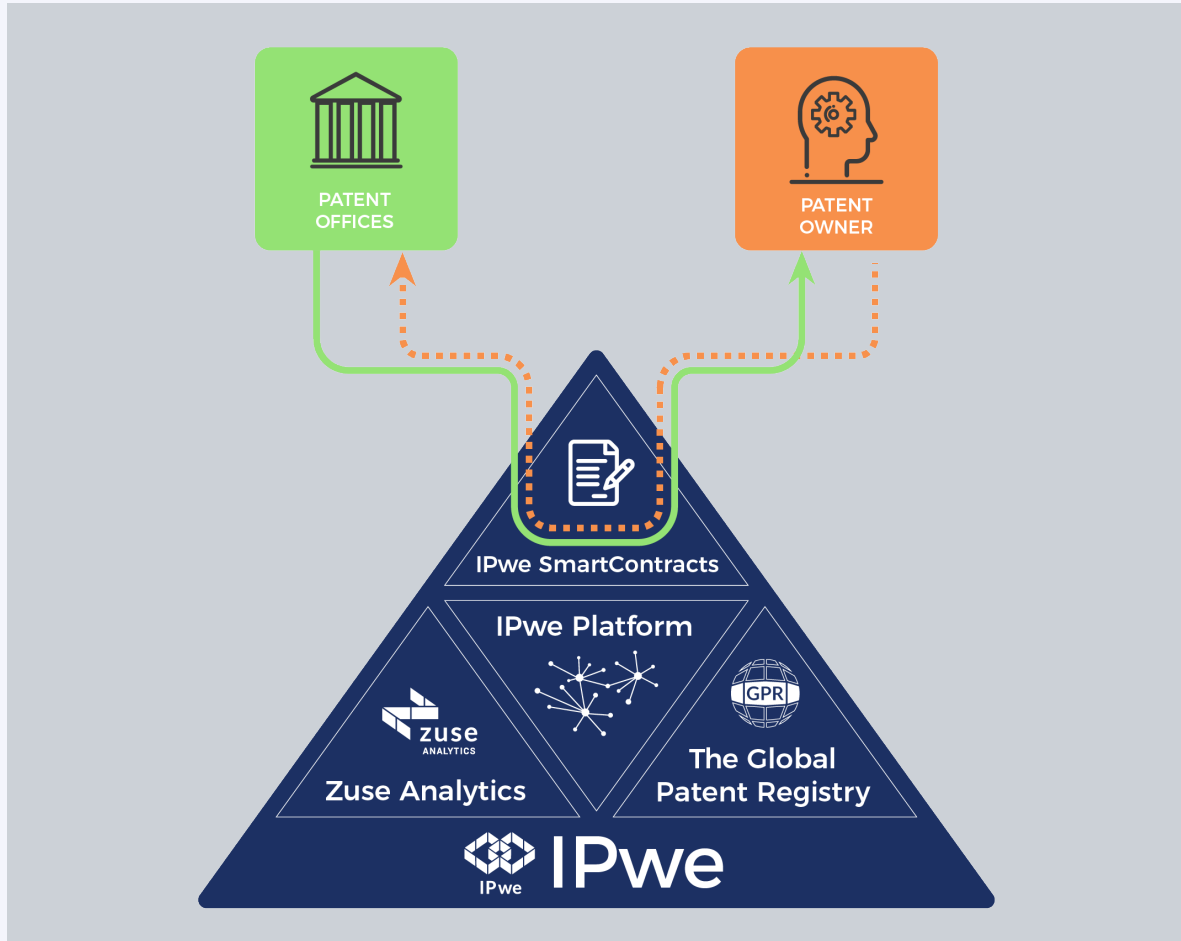
The IPwe platform enables traditional transactions (**licenses and acquisitions**) and empowers new classes of transactions such as **financings, maintenance fee payments and insurance**.

IPwe is leveraging technology to dramatically **lower your cost** of patent ownership.



# ILLUSTRATIONS

# Patent Annuity Payment



**Patent Office** has granted a patent to a **Patent Owner**



The **Global Patent Registry** is updated



**Patent Owner** funds paid to **Patent Office** for annuity payment



**Smart contracts** govern:

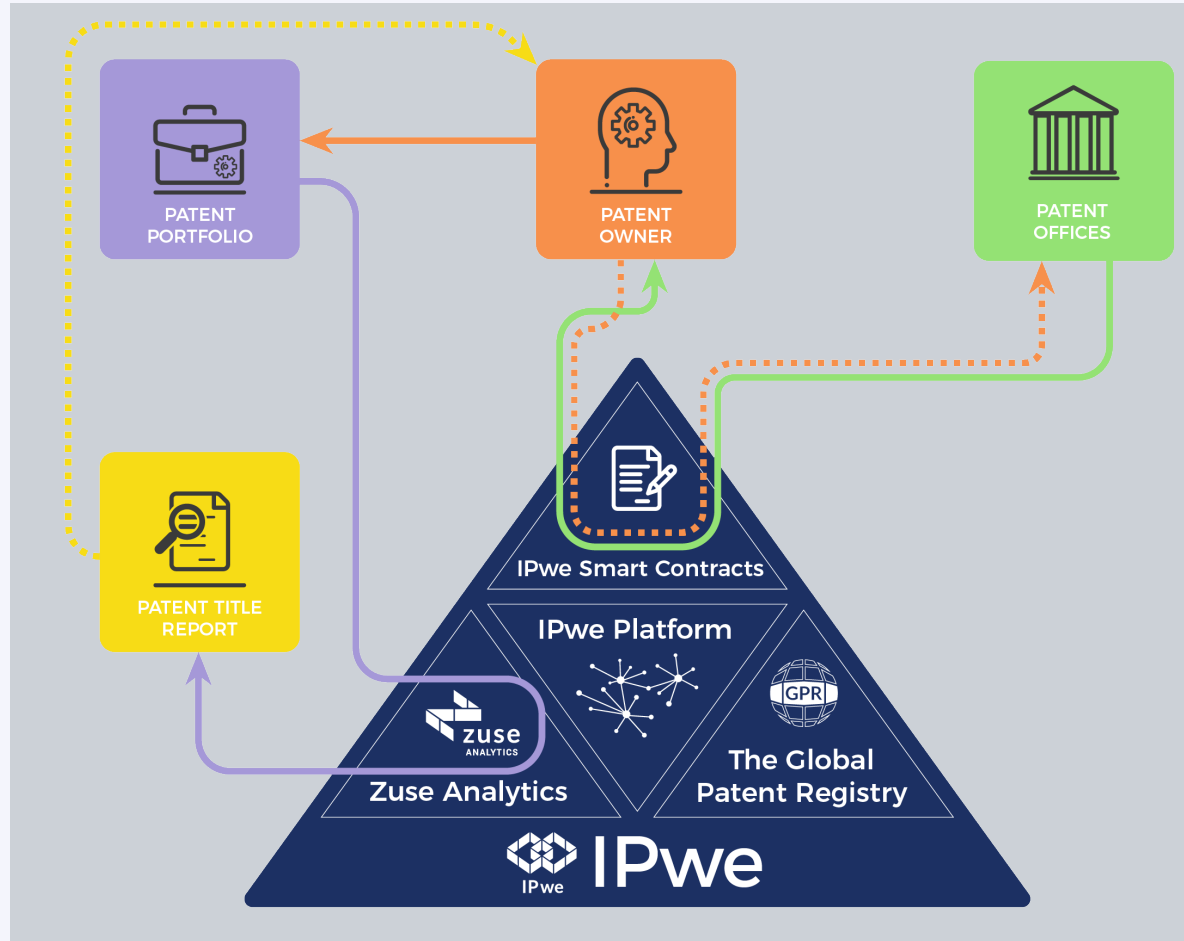
- Identification of patents
- Identification of patent owner
- Payment of annuities



**IPwe Platform** provides:

- Update to Global Patent Registry
- Analysis
- Annuity payment
- IPwe Smart contracts

# Title Confirmation



**Patent Owner** identifies patents included in Patent Owner's portfolio (entire portfolio or segment transacting) and electronically submits to Zuse Analytics and clicks "Patent Ownership Report"



**Zuse Analytics** compares ownership records at various Patent Offices and the Global Patent Registry (GPR) and using AI analytics, issues a Patent Title Report indicating any patent ownership title discrepancies identified



**Patent Owner** electronically selects any patent records it wishes to correct



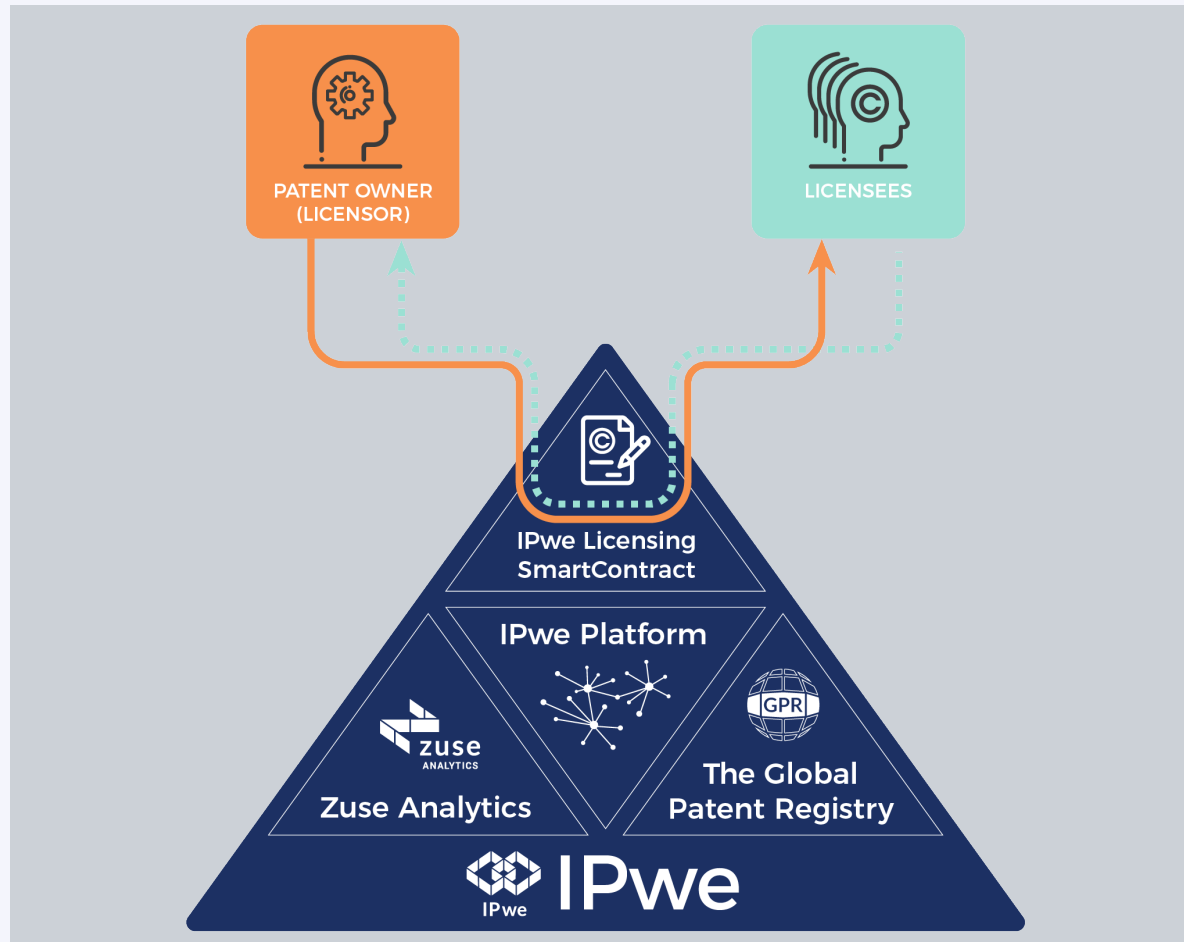
**Smart Contracts** are utilized to identify required Patent Office forms and procedures to correct any title defects. The required forms are provided to Patent Owner for completion, review and execution and filing with appropriate Patent Office



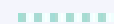
**GPR** is updated



# Patent License



**Patent Owner** licenses **Licensees** under selected patents



**Patent Owner** collects payment / royalties from **Licensees**



**Licensing Smart contract** governs:

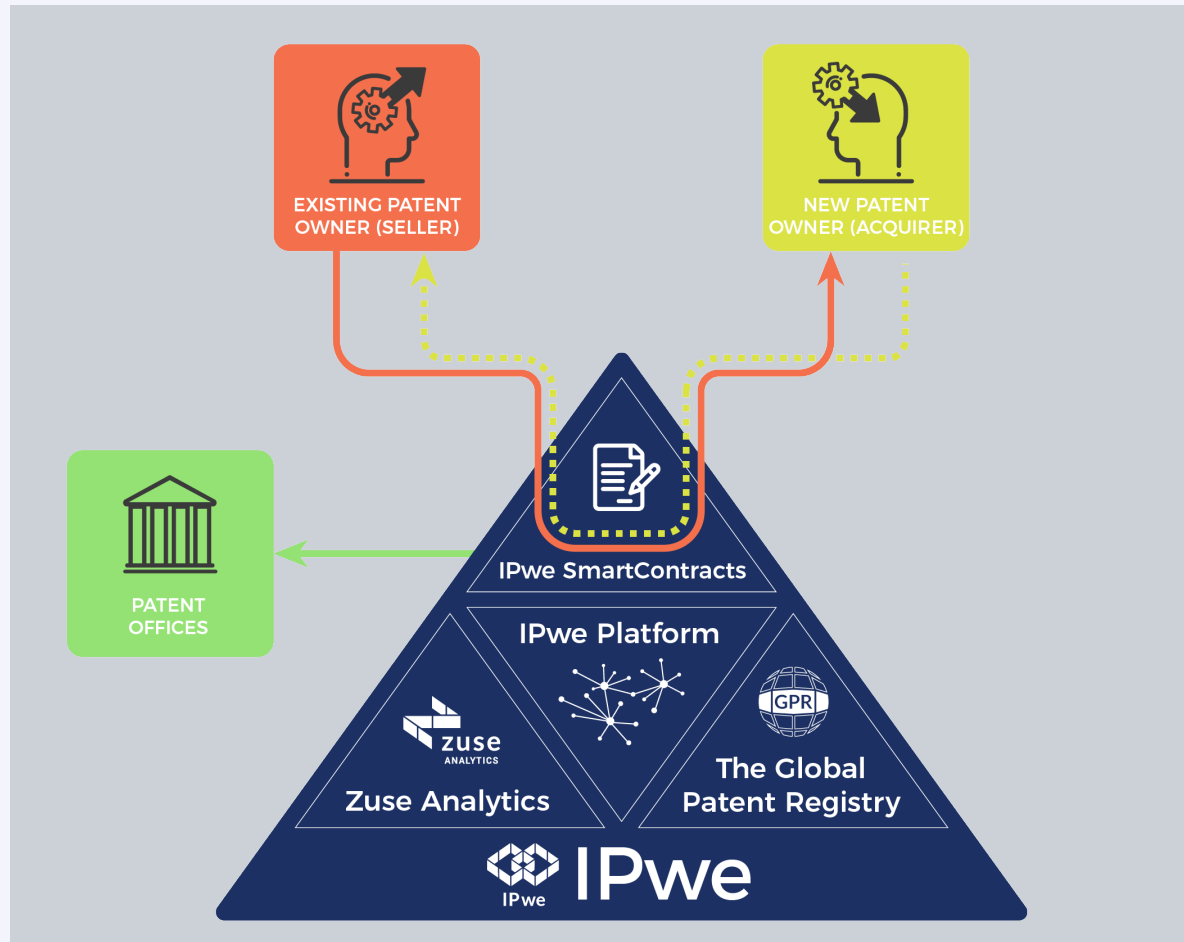
- Identification of patents
- Automatic execution, including payment
- Terms of License
- Whether any terms are made public or not



**IPwe Platform** provides:

- Analysis
- IPwe Smart contracts
- Title verification
- Reporting
- Annuity payment
- Royalty administration
- Transactional support

# Patent Sale



**Patent Seller** sells patents to **Patent Acquirer**



**Patent Seller** receives funds for the sale



**Patent Offices** receive the assignment information



**The Global Patent Registry** is updated



**Smart contracts** govern:

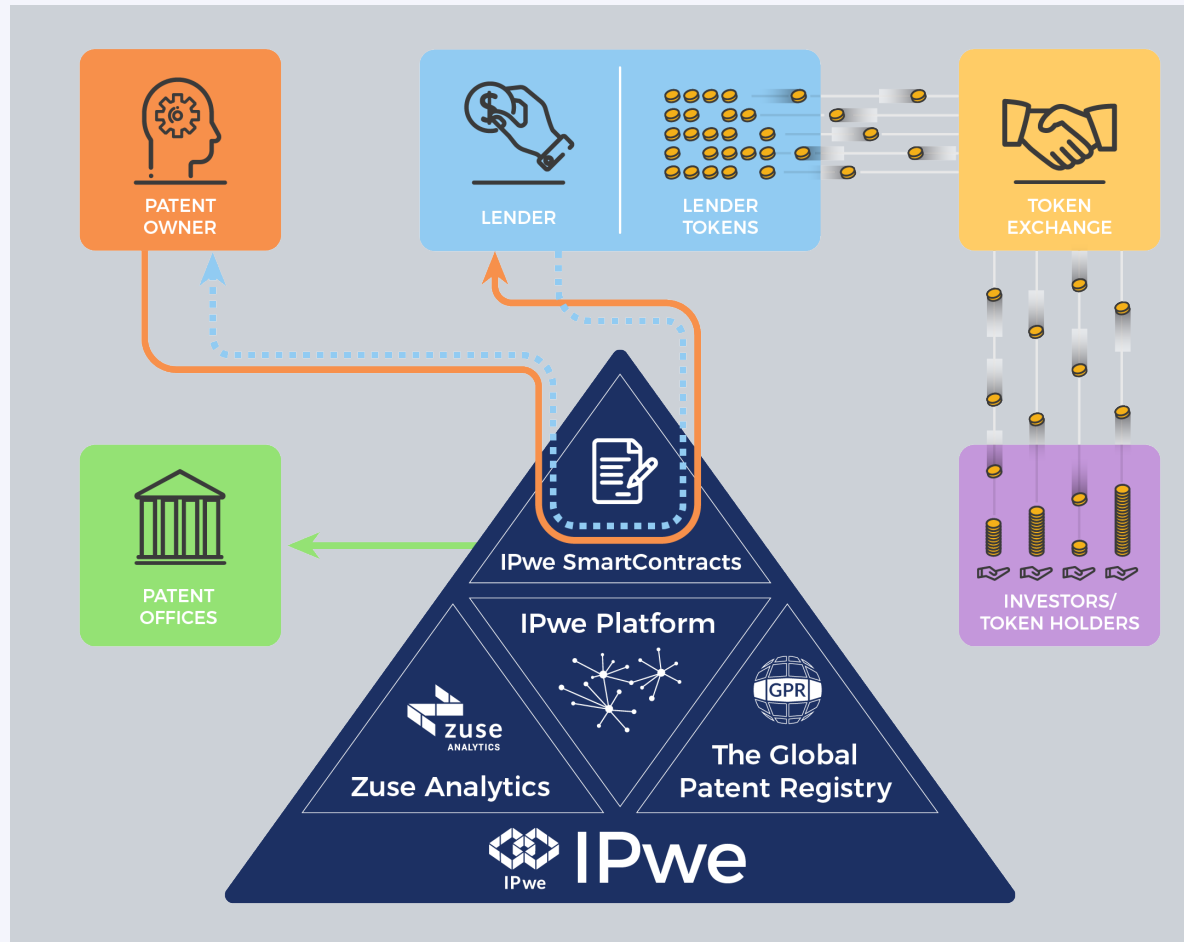
- Identification of patents and title update
- Automatic execution, including payment and reversion on default
- Terms of agreement
- Whether any terms are made public



**IPwe Platform** provides:

- Update to Global Patent Registry
- Analysis
- Annuity Payment
- Title verification
- IPwe Smart contracts
- Transactional support

# Tokenized Patent-based Lending



Patent Owner pledges patents to Lenders



Lenders provide financing and Patent Owner repays the loan



Patent Offices are informed about the pledge and release



Token Exchange organizes liquidity of the Lender Tokens among Investors

Smart contracts govern:



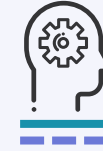
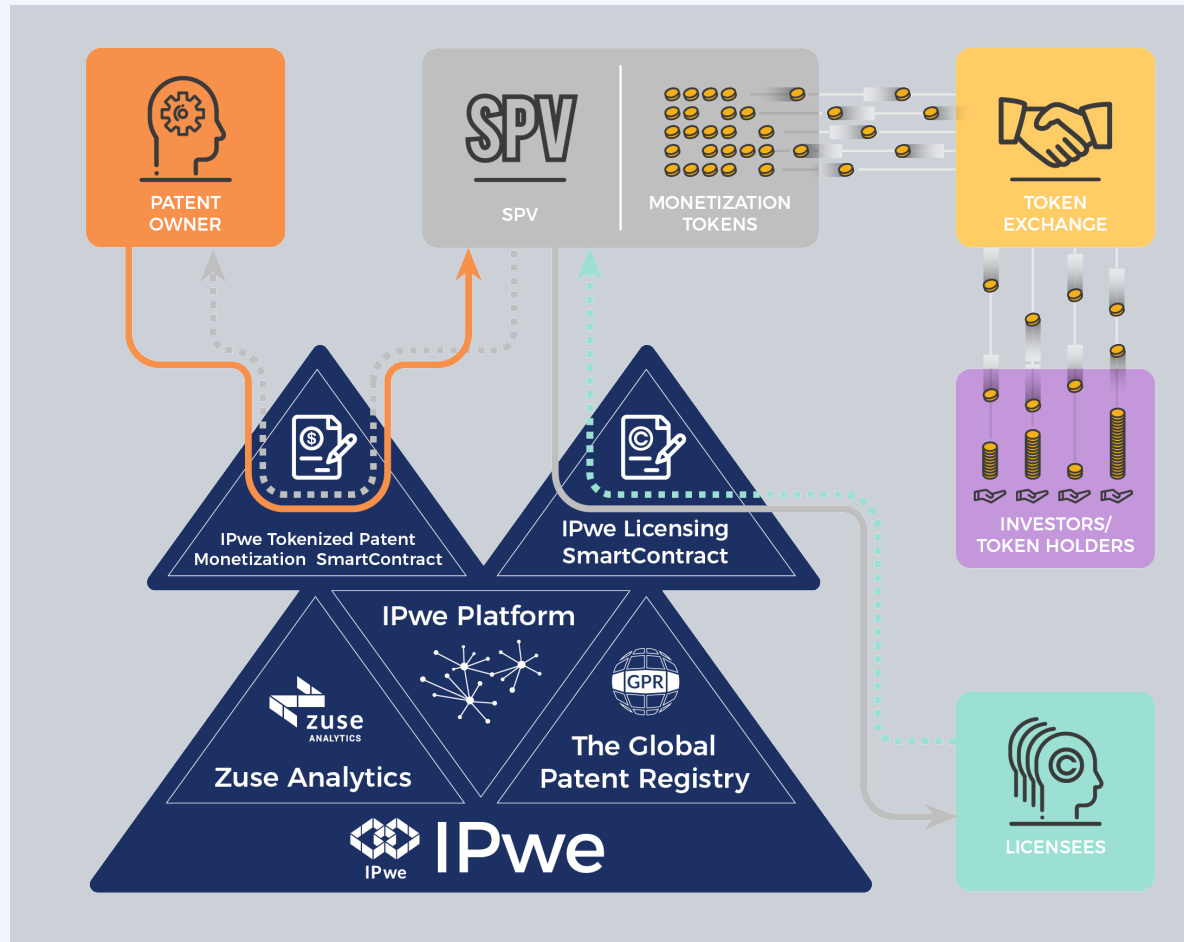
- Automatic execution, including payment
- Identification of patents and parties
- Terms of loan
- Token holders' rights



IPwe provides:

- Analysis
- IPwe Smart contracts
- Reporting
- Annuity payment
- Title verification
- Research
- Transactional support

# Tokenized Patent Monetization



**Patent Owner** transfers ownership of selected patents to an **SPV** and receives funds



**SPV** sets rules of licensing program to **Licensees** and collects royalties



**Token Exchange** organizes liquidity of the Monetization Tokens among **Investors**



**Tokenization Smart contract** governs:

- Automatic execution, including payment
- Identification of patents and parties
- Token Holders' rights



**Licensing Smart contract** governs:

- Automatic execution, including payment
- Identification of patents and parties
- Terms of the license
- Whether any terms are made public or not

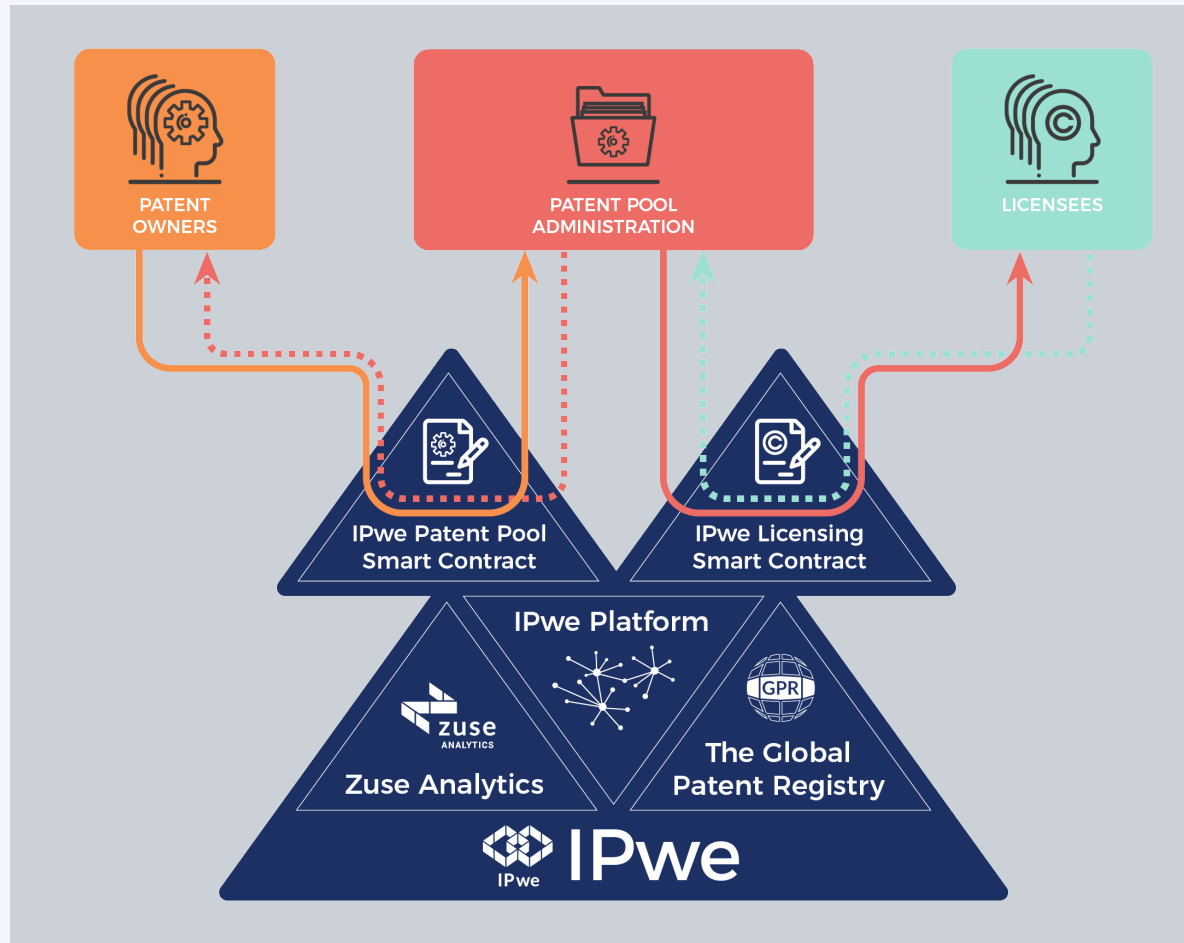


**IPwe Platform** provides:

- Analysis
- IPwe Smart contracts
- Reporting
- Annuity payment / title verification
- Royalty administration



# Patent Pooling



Patent Owners give licensing rights to **Patent Pool Administration** and sets terms



Patent Pool Administration grants licenses to **Licensees**, collects royalties and redistributes royalties to **Patent Owners**



**Patent Pool Smart Contract** governs:

- Identification of patents and parties
- Terms of the license
- Revenue share among patent owners



**Licensing Smart Contract** governs:

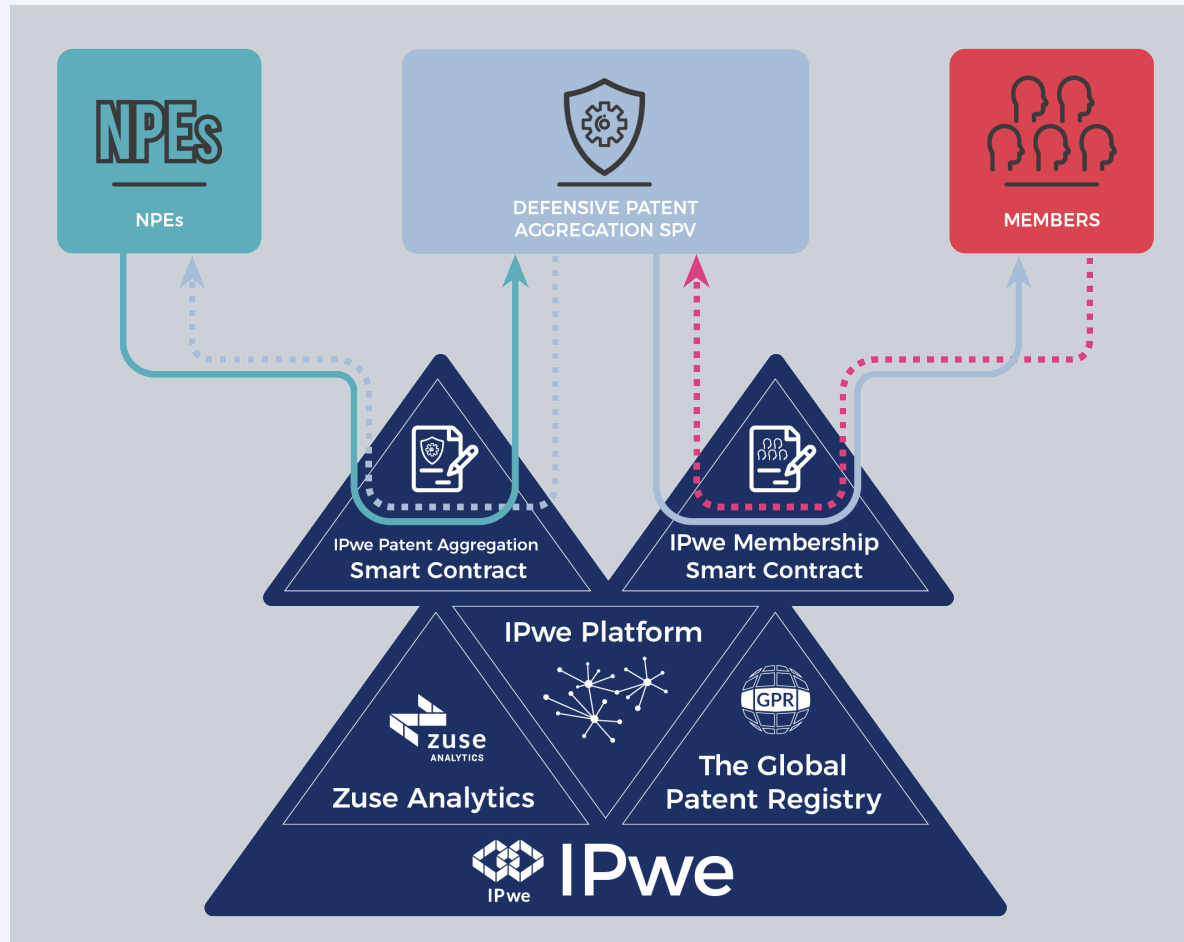
- Automatic execution, including payment
- Identification of patents and parties
- Terms of the license
- Whether any terms are made public or not



**IPwe Platform** provides:

- Analysis
- Future tokenization opportunity
- IPwe Smart Contracts
- Reporting
- Royalty administration
- Transactional support

# Defensive Patent Aggregation



**Non Practicing Entities (NPEs)** sell patents or licensing rights to **Defensive Patent Aggregation SPV**



**Defensive Patent Aggregation SPV** grants licenses to **Members** and collects membership fees and payments



**Patent Aggregation Smart Contract** governs:

- Automatic execution, including payment
- Identification of patents and parties
- Terms of the patent sale or licensing rights



**Membership Smart Contract** governs:

- Automatic execution, including payment
- Rights in SPV
- Terms of membership



**IPwe Platform** provides:

- Analysis
- IPwe Smart contracts
- Reporting
- Royalty administration
- Transactional support





IPwe

## Contact Us

sophie@ipwe.com

*Let's work together and revolutionize  
the patent ecosystem*

IPwe is the first platform that combines the information and tools to identify, research, understand and transact in patents. The IPwe platform enables traditional transactions (licenses and acquisitions) and empowers new classes of transactions like financings, maintenance fee payments and insurance. IPwe is leveraging technology to dramatically lower your cost of patent ownership.